



**AUSTRAL  
PLYWOODS**

# ENDURAPANEL®

DECORATIVE PLYWOOD PANELLING  
FOR WALLS AND CEILINGS



PRODUCT CERTIFIED



PATENT NO: 2014100825

[www.australply.com.au](http://www.australply.com.au)  
PH: 07 3426 8666



# ENDURAPANEL® IS A UNIQUE PLYWOOD PANELLING SYSTEM THAT CAN BE USED TO **ENHANCE** ANY LIVING SPACE.

- BALCONY CEILINGS
- ALFRESCO CEILINGS
- HOME THEATRE
- INTERNAL FEATURE WALLS & CEILINGS
- EXTERIOR CLADDING
- RESTAURANT CEILINGS

**BEFORE**



**AFTER**



# ENDURAPANEL®

## BEAUTIFULLY BUILT. BUILT TO LAST.

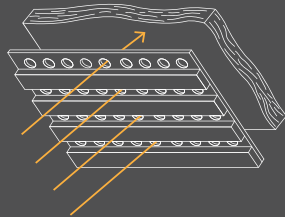
- MANUFACTURED WITH THE HIGHEST QUALITY HOOP PINE EXTERIOR PLYWOOD.
- FINISHED WITH A UNIQUE COATING SYSTEM THAT PROTECTS AGAINST FUNGI AND ROT.
- COATING IS COVERED BY A 7 YEAR WARRANTY (SEE WEBSITE FOR DETAILS).

## ACOUSTIC ENDURAPANEL®

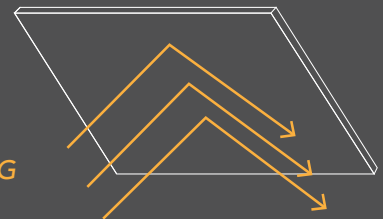
Modern homes typically combine open plan living areas with timber and tiled floors, causing unwanted noise travel. Acoustic Endurapanel® solves this common problem by way of excellent sound absorption properties, with the added benefit of creating a beautiful feature in any home.

Sound travels through the perforations in the panel and into the insulation, absorbing unwanted noise and echo. Acoustic Endurapanel® is also perfect for alfresco areas, balcony ceilings, restaurants, and shop fitouts.

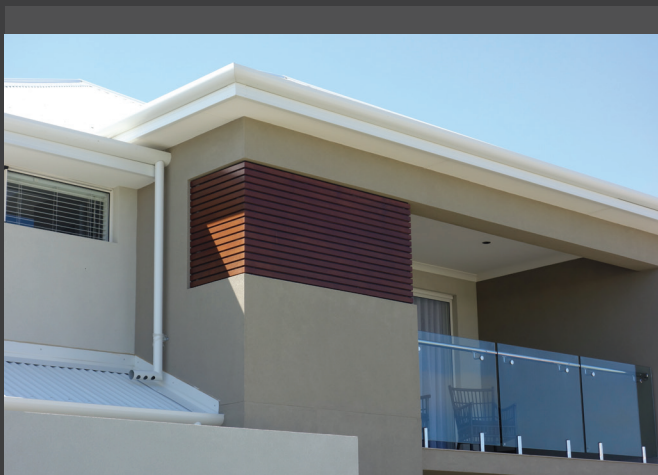
ENDURAPANEL®  
CEILING



NORMAL CEILING



## CREATE THE PERFECT LOOK WITH ENDURAPANEL®



Create a seamless look making use of the tongue and grooved ends.



Or make a feature of the joins choosing either a 'slim line' or 'bold' cover strip.

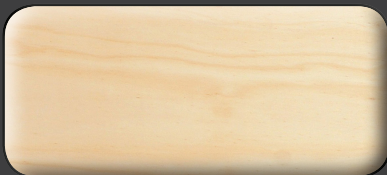




## EASY INSTALLATION

Endurapanel® has been designed with easy installation in mind. All components are factory finished, allowing large areas to be covered in just a single day.

## ENDURAPANEL® IS AVAILABLE IN A FANTASTIC RANGE OF COLOURS



NATURAL HOOP



BLACKBUTT



SPOTTED GUM



JARRAH



WALNUT



EBONY

For all technical information visit [www.australply.com.au](http://www.australply.com.au)